

On Case Inlet Our Tidelands are Changing



Photos contributed by Case Inlet residents and may not be copied without permission.



Community just north of Foss Geoduck operation. Trash from farms continually being picked up from this area.



Taylor Foss geoduck operation, 9/4/06



Accumulation of macro algae on Foss geoduck farm.



Accumulation of macro algae on Taylor Foss operation.



Loose tubes on Foss geoduck farm, 9/4/06



'Predator Exclusion' netting – Taylor Foss operation, 9/4/06



Taylor Foss geoduck operation, crab caught under predator exclusion netting, 9/4/06



**Otter with a rubber band around its waist near geoduck farm.
Citizens unable to help – Case Inlet, 2/3/06**



Taylor Foss geoduck operation – dragging nets, April 2007



Taylor Foss geoduck operation – pulling tubes, 2007



Taylor Foss geoduck operation – tube barge and workers, 2007



Taylor Shellfish Foss operation barge and commercial traffic, 2/8/07



Taylor Shellfish Foss operation barge 4/22/07



Taylor Foss operation, barge with harvest pump, 5/07



Taylor Foss geoduck operation – tube barge, May, 2007



Taylor Shellfish geoduck barge on Foss Farm 6/2/07



Taylor Foss geoduck operation – barge still there June, 2007



Taylor Foss geoduck operation, harvest area, 7/30/07



Taylor Foss geoduck operation – unloading crates for harvest, 2007



**Taylor Foss geoduck operation –harvest pump barge, May,
2007**



22

Taylor Foss geoduck operation – boats, nets, harvest, 3/24/07



23

Taylor Foss geoduck operation – boats, nets, harvest, 2007



Beach two days after Taylor Shellfish harvest, Foss operation, tube abandoned on beach. 4/22/07



**Beach after Taylor Shellfish geoduck harvest, Foss
operation, 6/2/07**



Foss farm, up to knees in muck, 6/2/07



27

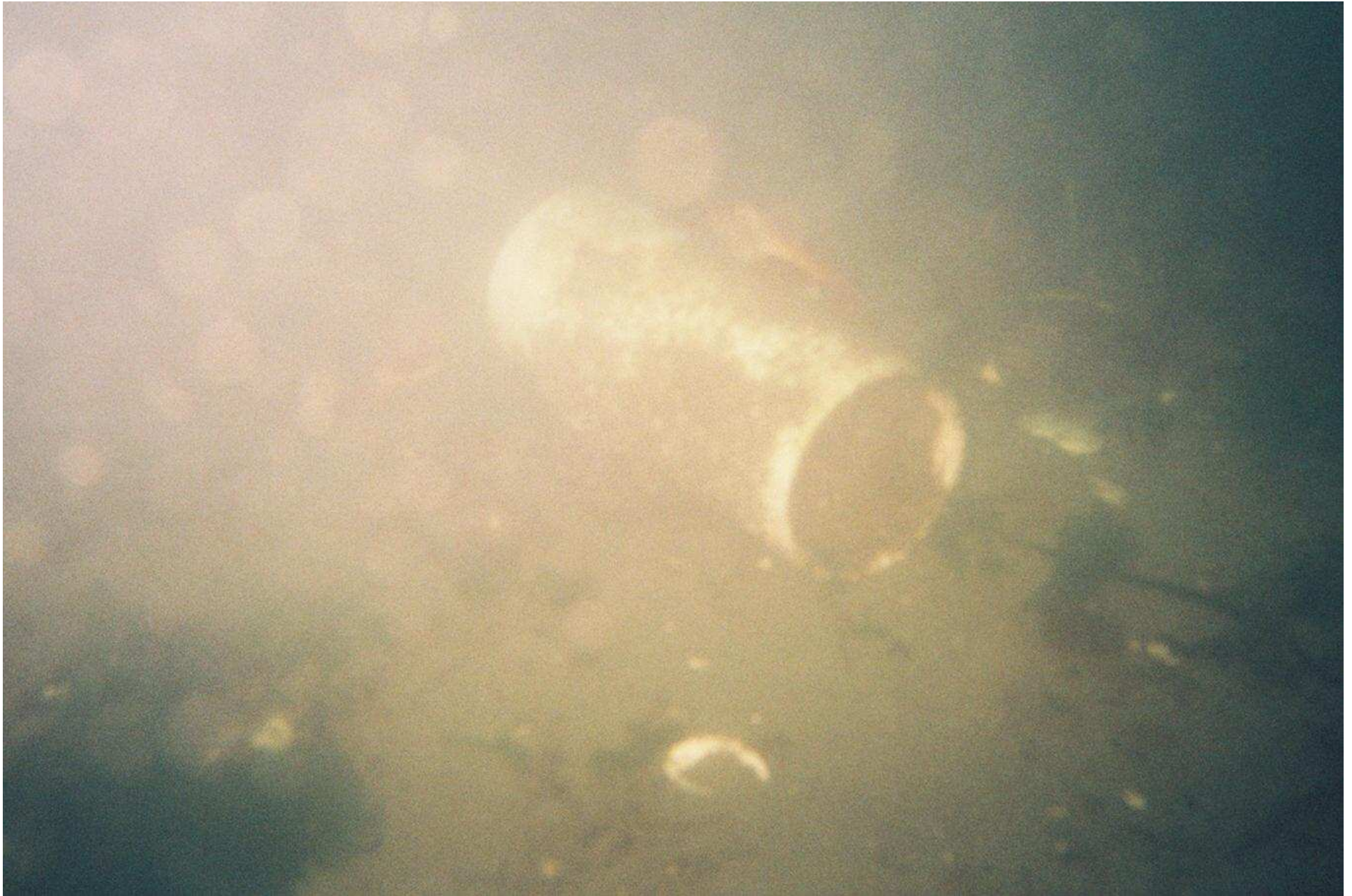
Taylor Foss geoduck operation – nets and tubes, 2007



Cargo nets and tubes - Foss farm, 4/22/07



**Taylor Shellfish Foss farm debris in deeper water, seen by
diver, 5/07**



**Taylor Shellfish Foss farm debris in deeper water seen by
diver, 5/07**



Taylor Foss operation, rebar hazard, 03/07



**Taylor Foss operation, anchored ropes along the beach,
3/07**



Taylor Shellfish Foss operation, anchor rope, 3/07



Taylor Foss operation - dead fish left in net after tube removal, 6/11/07



Density of tubes that did not escape under net, 6/11/07



Taylor Foss operation, double netting traps crab, 6/11/07



Taylor Foss operation, net traps crab, 6/11/07



Taylor Foss operation, density of geoducks per square foot, 6/11/07



Taylor Foss operation, loose netting, 6/11/07



Taylor Foss operation, netting covered with algae, 6/11/07



New planting on Foss farm, 7/3/07



New planting on Foss farm, 7/3/07



New planting on Foss farm, 7/3/07



New planting on Foss farm, 7/3/07



Taylor Foss operation 8/14/07



Taylor Foss operation water jet geoduck harvest, 8/14/07



Taylor Foss operation water jet harvest, obvious sediment plume, northern edge of Foss property. 8/14/07



Taylor Foss operation harvest. Close up of two harvesters “in the hole.” 8/14/07



**Taylor Shellfish
operation, brown
scum on beach
north of Foss farm,
2/8/07**



Taylor Foss geoduck operation – geoducks planted close to pilings, high up on the beach, 10/23/07



**Taylor Foss geoduck operation – workers carrying off debris,
10/23/07**



Taylor Foss operation, barge for new planting, 10/28/07



Taylor Foss operation, barge for new planting, 10/28/07